

PARKER JAMES

ESTATES

Established since 1995



Palace Wharf

Rainville Road London W6 9UF

- Available Now
- Crestron Control System
- Comfort Cooling
- On-site buildings manager
- CCTV
- Interior designed
- Gated Riverside Development
- Parking Space
- Pet Friendly
- Furnished or unfurnished

£2,810

Palace Wharf

Rainville Road London W6 9UF



Available immediately is this unique interior designed newly built three-bedroom, four-bathroom townhouse and is located within a privately gated, riverside development with a private car parking space.

The townhouse is arranged over four floors boasting three fabulous balconies at three different levels each one overlooking the River Thames. Townhouse 3 benefits from a bespoke, high gloss 'Macassar' kitchen with fully integrated Miele appliances including wine cooler and a Crestron Home Automation System that controls the lighting, heating/air con and TV's throughout the property.

This wonderful home is full of light and outstanding entertaining spaces. The ground floor is arranged with the family in mind with its large eat-in kitchen/breakfast room with views over the River Thames, utility area and cloakroom.

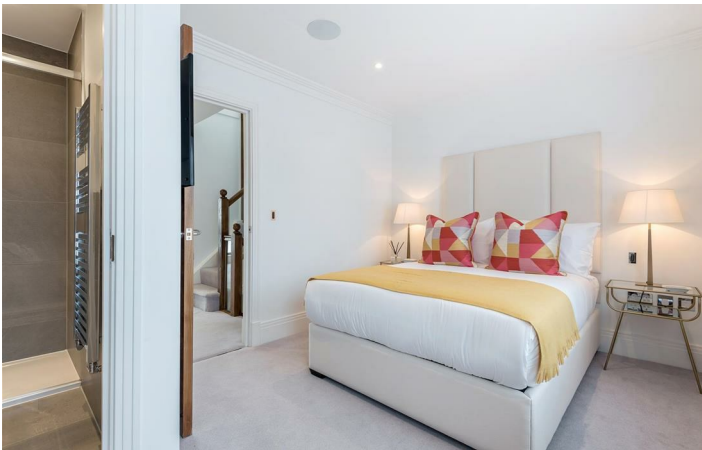
Following the staircase to the 1st floor and you will be greeted with a dual aspect reception area which is divided into the dining room and lounge area with direct access to one of the river view terraces via the bi-folding doors. The staircase extends up to the three bedrooms with two on the second floor and one with its own en-suite, as well as a family bathroom.

The master bedroom suite is located on the entire top floor and is arranged with a dressing room and en-suite bathroom. The terrace for the bedroom is accessed by bi-folding doors giving the master bedroom an ever-changing panoramic view.

With its riverside location, Palace Wharf is also conveniently close to several transport links including Hammersmith Overground and Underground Station, Barons Court, Putney Bridge, and Fulham Broadway Underground Stations, along with several regular and varied bus services which further improve accessibility.



[Directions](#)





Floor Plan

These particulars, whilst believed to be accurate are set out as a general outline only for guidance and do not constitute any part of an offer or contract. Intending purchasers should not rely on them as statements of representation of fact, but must satisfy themselves by inspection or otherwise as to their accuracy. No person in this firm's employment has the authority to make or give any representation or warranty in respect of the property.



48 Warwick Street Soho, London, W1B 5NL
Tel: 020 7287 4244 Email: management@parkerjamesestates.co.uk parkerjamesestates.co.uk

