

PARKER JAMES

ESTATES

Established since 1995



## Lambeth Walk London SE11 6AZ

- Available 19th September
- Third floor
- Balcony
- Two bathrooms
- Secure bicycle store
- Furnished
- Lift
- Two double bedrooms
- Landscaped garden
- Lambeth North station close by

£588 Per Week

# Lambeth Walk

London SE11 6AZ



Available from the 19th of September on a furnished basis is this third floor apartment with lift and private balcony in Lambeth which enjoys a fantastic view of the London Eye.

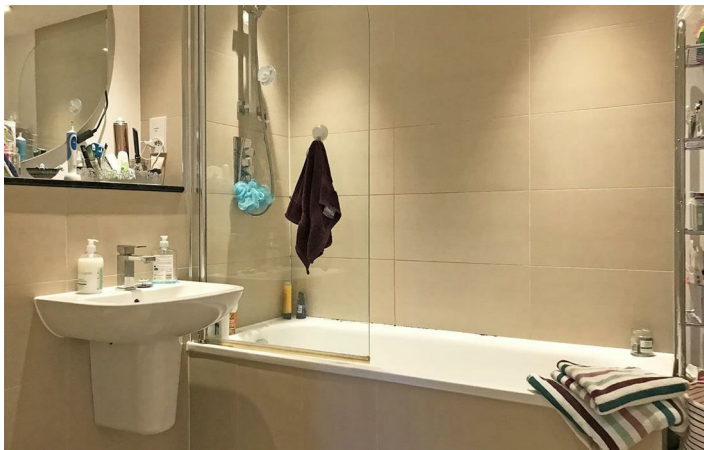
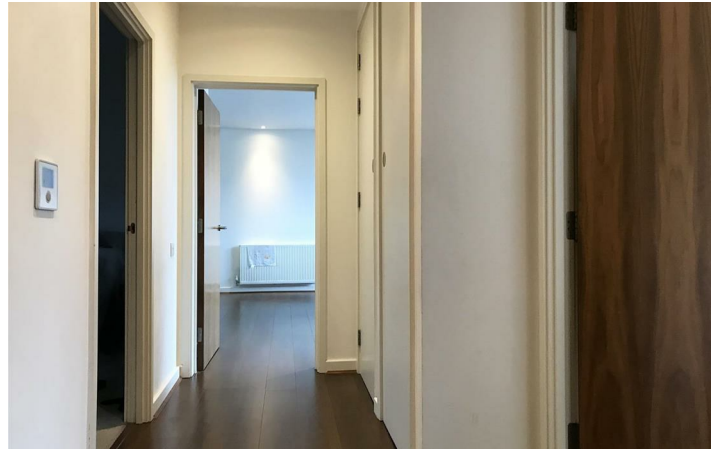
The 82 sqm property has wood flooring throughout and briefly comprises an entrance hall, reception room which has double glazed sliding doors opening onto the balcony and is open plan to a fully fitted kitchen with integrated appliances including a dishwasher, two double bedrooms one of which benefits from an ensuite shower room and a further bathroom off the hallway.

Arundel Court a well maintained building constructed in 2012 with an attractive leafy landscaped communal garden and secure bicycle store for its residents within walking distance of Lambeth North (Bakerloo line) and Vauxhall (Victoria) underground stations, a good choice of shops on Kennington Road, bars, restaurants and some of London's best cultural attractions whilst pleasant open space can be found in nearby Archbishop's Park and Vauxhall Pleasure Gardens.



[Directions](#)







Floor Plan

These particulars, whilst believed to be accurate are set out as a general outline only for guidance and do not constitute any part of an offer or contract. Intending purchasers should not rely on them as statements of representation of fact, but must satisfy themselves by inspection or otherwise as to their accuracy. No person in this firms employment has the authority to make or give any representation or warranty in respect of the property.

