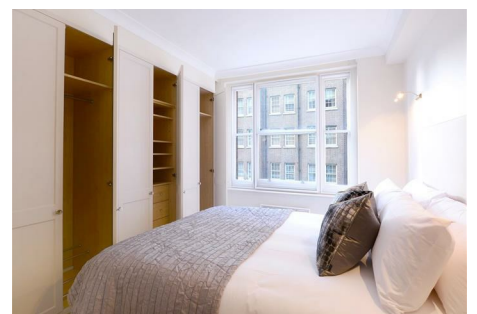
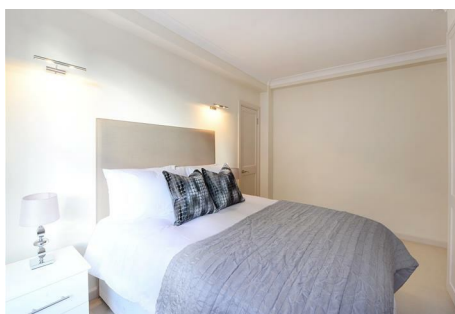
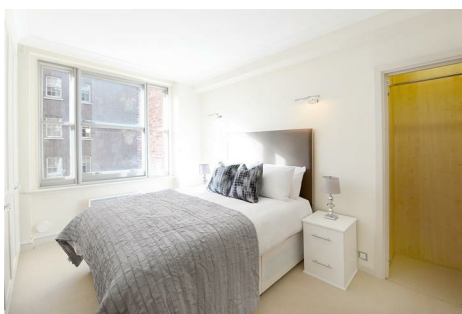


PARKER JAMES

ESTATES

Established since 1995



## Hill Street London W1J 5LZ

- Available from the 28th August
- Lift service
- A stylish kitchen
- Access to a private gated communal garden
- Available furnished or unfurnished
- 3 spacious double bedrooms
- Nestled conveniently between two of London's parks Hyde Park and Green Park.
- Plenty of storage space
- Tube stations, Green Park, Bond Street and Marble Arch are all within a short stroll away.
- On site Porter

£1,680 Per Week

# Hill Street

London W1J 5LZ



Available from the 28th August, this apartment offers three spacious double bedrooms, one with an en-suite, a large reception/ dining area, beautifully modern fitted bathrooms, a stylish kitchen and plenty of storage space as well as access to a private gated communal garden.

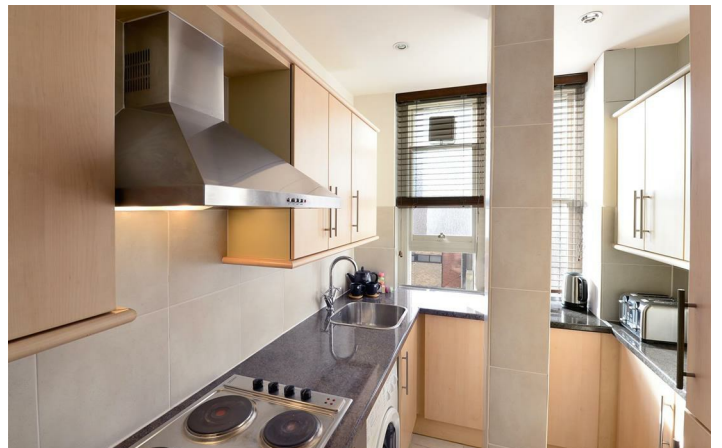
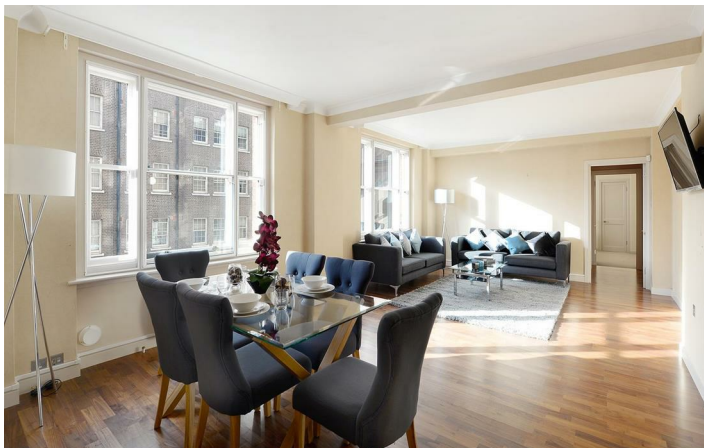
Hill Street, the building itself benefits from spacious living accommodation, lift service, on-site building manager, and is nestled conveniently between two of London's parks Hyde Park and Green Park.

London underground stations, Green Park, Bond Street and Marble Arch are all within a short stroll away.



[Directions](#)







Floor Plan

These particulars, whilst believed to be accurate are set out as a general outline only for guidance and do not constitute any part of an offer or contract. Intending purchasers should not rely on them as statements of representation of fact, but must satisfy themselves by inspection or otherwise as to their accuracy. No person in this firms employment has the authority to make or give any representation or warranty in respect of the property.

