

PARKER JAMES

ESTATES

Established since 1995



## Kensington Church Street

London W8 4BD

- Available 8th July
- First floor
- Secondary glazed
- Study
- Close to bars and restaurants
- Furnished
- Lift
- Four bedrooms
- High Street Kensington station minutes away
- Holland Park nearby

£1,092 Per Week

# Kensington Church Street

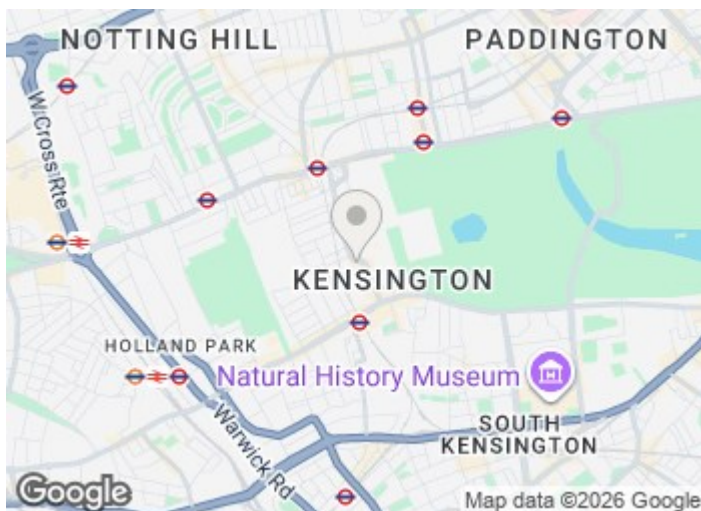
London W8 4BD



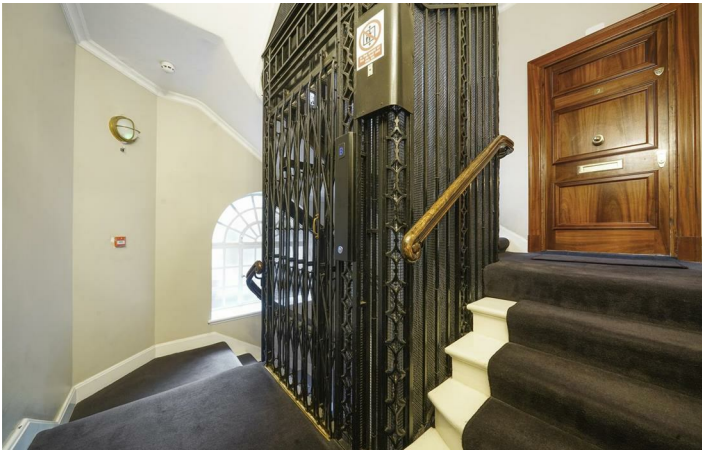
Available from the 8th July on a furnished basis is this first floor flat with lift on highly desirable Kensington Church Street which connects Notting Hill Gate with Kensington High Street.

The 144 sqm secondary glazed property forms part of a very well maintained mansion block at the southern end of Kensington Church Street and enjoys plenty of natural light briefly comprises an entrance hall with wood flooring, front facing reception room with ample space for dining, fitted kitchen/breakfast room, four double bedrooms, study, family bathroom and additional WC.

Newton Court is just a short walk to High Street Kensington (District and Circle lines) and Notting Hill Gate (Central) stations, an array of designer stores on Kensington High Street, fashionable bars and highly regarded restaurants whilst open space can be found in picturesque Holland Park.



[Directions](#)





# Floor Plan

These particulars, whilst believed to be accurate are set out as a general outline only for guidance and do not constitute any part of an offer or contract. Intending purchasers should not rely on them as statements of representation of fact, but must satisfy themselves by inspection or otherwise as to their accuracy. No person in this firm's employment has the authority to make or give any representation or warranty in respect of the property.



48 Warwick Street Soho, London, W1B 5NL  
Tel: 020 7287 4244 Email: [management@parkerjamesestates.co.uk](mailto:management@parkerjamesestates.co.uk) [parkerjamesestates.co.uk](http://parkerjamesestates.co.uk)

